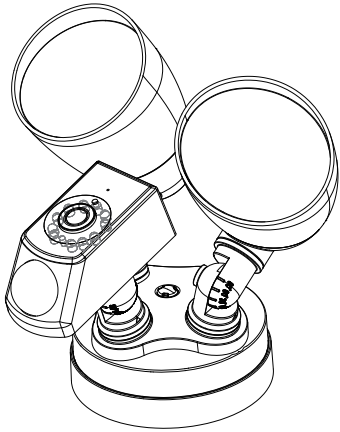



## LED Camera Motion Security Lights instruction manual



**IP 65**  **Warranty 3 years**

To ensure proper usage of the lamps, please carefully read and keep this instruction manual for future reference

1

**CAUTION:** TURN OFF POWER FROM THE MAIN CIRCUIT BEFORE INSTALL- ING FIXTURE. Make sure fixture is grounded per National Electrical Codes (NEC).

**Important Note:** The safeguards and Instructions appearing on this page are not meant to cover all possible conditions and situations that may occur. It may be understood that common sense, cautions and care, are factors which cannot be built into any product. The person(s) installing, operating and responsible for the light fixture must execute these factors.

**CAUTION:** To help prevent the possibility of electrical shock, the use of rubber sole shoes is recommended. Exercise care; use work gloves when handling the fixture to avoid cuts or abrasions.

### ASSEMBLY AND INSTALLATION

- 1).Tools needed: screwdriver, adjustable wrench, wire nuts, electrical tape, silicone calk.
- 2).Exercise care when handling the fixture to avoid cuts or abrasions, to help prevent the possibility of electrical shock, it is recommended to use rubber sole shoes.
- 3).Carefully unpack and check contents of the box to be sure everything is included.
- 4).Turn OFF Power at circuit breaker box.
- 5).Electrical Connections: Make sure the supply wires and ground wire of fixture go through the Gasket(13). Attach green/ or bare copper wire and the green ground wire of fixture(6) to the 3.5"outlet box (12), and if outlet box is 3inch, please use a crossbar(10). (Ground wire must be properly

2

attached or unit may not work). Connect the white supply wire to the white fixture wire(8), cover them with a wire nut(7) .or twist together and cover really well with electrical tape. Connect the black supply wire to the black fixture wire(9), cover them with a wire nut(7) or twist together and cover really well with electrical tape. Push the connected wires back into the electrical box.

6).Install Bracket Screw (1) into center hole of Fixture Back Mount base(5). Align Fixture over J-box with Gasket(13) between it and the Canopy. Secure the Unit to Cross Bar by tightening Center Bracket Screw(1). Crossbar (10) is Option Accessories.

7).Turn on electricity at fuse or circuit breaker box and Test Unit success of installation. (see motion)

8).Place a small streak of silicone caulk on the edge of the fixture bracket, except at the brackets lower edge. Place the bracket of the fixture so the bracket connecting screw protrudes out of the hole on the fixture bracket. Make sure the fixture is oriented right side up and not upside down on the mounting surface. Confirm that the caulking sealant is completely around the edge of the fixture bracket where it meets the walls surface (There should be no caulking at the lower edge of the bracket). Tighten up the bracket to the wall. If the fixture bracket is not tight against the wall, you may need to adjust the two nuts that are on the bracket connecting screw. Make sure the unit is tight and secure against the wall.

3

### Safety Cautions

- Confirm whether the voltage meets the requirements before using. Improper voltage will damage the device and bring safety risks
- Install the device correctly and make sure to cut off the power supply during installation
- The device generates heat while working, please avoid using it in a small confined space
- Don't touch it with bare hands after long-time use to avoid scalding
- Comply with the law for proper use of camera functions

### Special Announcement

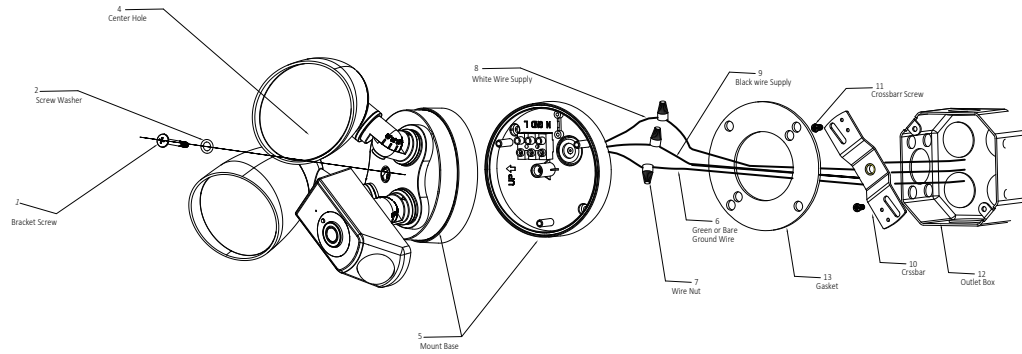
- Manual is for reference only. The product is subject to the real object
- APP and product device firmware will be updated from time to time. If there is any upgrade, please upgrade online by yourself without prior notice. The manual is for reference only
- The manual may contain technically inaccurate places, or places that are inconsistent with product functions or printed errors. Please refer to the final interpretation of the company

### Notice

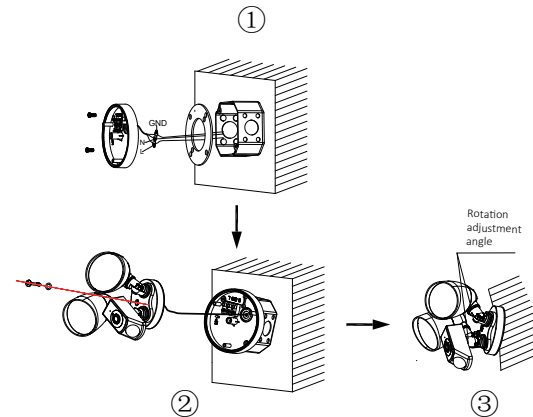
- Modify the user password while using the product to avoid being embezzled by criminals
- Do not install the device in a place that is damp, dusty, and accessible to children
- Use and store the product within the allowable temperature and humidity range, and do not disassemble the device at will

4

### INSTALLATION METHOD



5



7

### INSTALLATION METHOD



8

Quick Operation Guide

△Currently, the camera supports 2.4G WiFi with 802.11b/g/n protocol, but does not support 5G WiFi. Please keep the 2.4G connection between the mobile phone and the router

Download and install the app

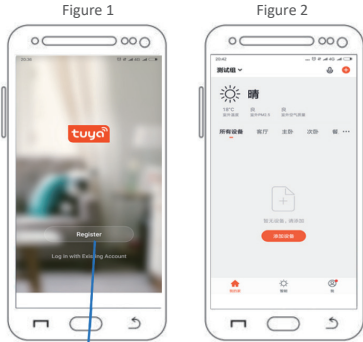
Method 1: Scan the QR code to download quickly



Method 2: Search and download "Tuya Smart" in the mobile app store

Register User and Log in

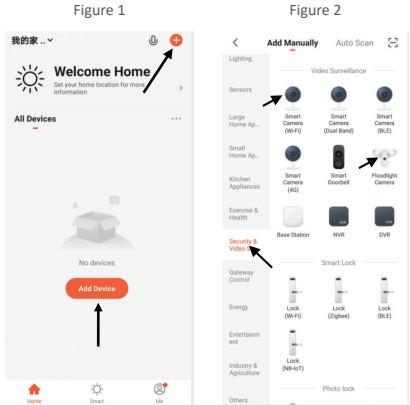
- Open the App, if you don't have an account yet, click "Create a New Account" (Figure 1), you will enter the "Aikan Smart Platform privacy policy" page. After clicking "Agree", use your mobile phone number or email to register an account
- After registration, log in to the system. You can choose password login or verification code login
- After logging in to the system, you can directly choose to add a device or create a family and then add. The method of creating a Family: Click "I" in the bottom right corner of the APP, select "Family Management" and "My Home" to fill in the information and save.



Click "Create New User" and enter the corresponding information.

Adding Device

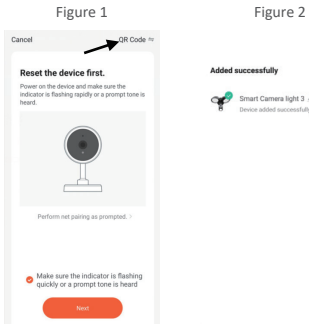
- Click "Add Device" or "+" at the top right of the app home page to manually add devices and search devices in the LAN. Manually add devices as shown in the figure, select: security monitoring → smart camera / camera light
- App provides two ways to configure the network: QR code mode and quick WiFi connection. QR code mode is the default mode. You can switch the network configuration mode by clicking "Other Network Configurations" in the upper right corner of the home page of "QR Code Mode"



Network Configuration  
Method 1 (QR Code)

- Use the "QR code" to configure the network, first confirm that the smart device indicator is in the network configuration mode (after the initial network configuration or reset, power on the device and hear "Dingdong"), click the button (figure 1) to enter the next step, then enter the WIFI password, click "Confirm", the QR code network configuration guide interface appears. Click "Continue", a QR code will be displayed, use the device to scan the QR code on the phone, after hearing the sound from the device, click the button to enter the next step.

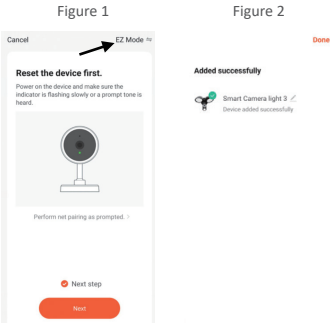
After the network configuration is done, you can modify the device name or select the location of the room.



Method 2 (WIFI Quick Connection)

- Use WIFI to quickly connect to the network, please first confirm that the indicator of the smart device is in the network configuration mode (after the initial network configuration or reset, power on the device and hear "Dingdong")
- Select WIFI quick connection, click "Next", enter the WIFI password, click "Confirm", enter the WIFI Quick Connection interface (figure 1)
- After hearing "Dingdong" of the device, wait for the app to pop up the successful connection interface, click "Done" (figure 2), the device is successfully added

After the network configuration is done, you can modify the device name or select the location of the room.

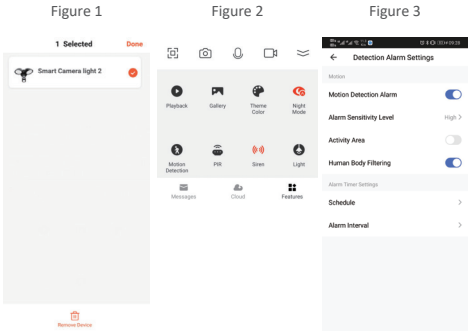


View Real-time Video

- Click on the device, enter the camera's control panel, the interface shows the live image, and can be high-definition, standard-clear switching and perform full-screen play operation. The bottom menu provides taking photo, speaking, video, video replay, picture direction, alarm and other settings
- Click on the settings button in the upper right corner to enter the settings interface, you can set the device name, sharing device, basic functions and other settings

Remove Device and Interface Settings

- Enter the homepage, select the Smart Camera Light logo, and long press as shown in figure 1, to remove the device. After removal, you will hear the device emit a "Di" sound, restart and enter pairing mode and then you can replace another mobile phone to enter the connection. (Notice: If the device connection is not removed and another mobile phone is replaced, it cannot be connected.)
- The PIR in the device application interface can be adjusted with sensitivity "Off/Low/Medium/High", Night Mode "Auto/Off/On", Motion Detection "On/Off", Working Mode "Light up at night/Light up during the day/All day induction light". PIR sensing will not cause background notifications. PIR+Motion Detection or PIR+Motion Detection+Human Body Filtering will provide background notifications. Siren is the alarm sound On/Off, and Light can set the brightness and switch of the light.



Common Problem

Q: How to share device?

A: In the real-time video viewing interface, click the settings button in the upper right corner to enter the device settings interface, click "Share Device", then click "Add Sharing", enter the mobile phone number or email address of the user you want to share, and click "Finish". Then the sharing is successful

Q: How does the camera store the video?

A: At present, the camera supports TF cards of EXFAT, FAT32 format and Class6, Class10, with 128G maximum support. TF card automatically deletes earlier videos after it is full, and it records in a loop

Q: How to check if the camera is offline abnormally?

- A:
1. Check whether the power supply and network are normal
  2. Restart the device
  3. Reconfigure the camera
  4. Check whether the internet at home is normal

Q: How to switch the network environment

A: When using in a new network environment, please use a thin pin to press RESET hole on the back of the device for about 2 seconds, and release it after hearing the "Ding Dong" prompt, which means the reset is successful. Restart and then connect to the network configuration

Description

The APP and device firmware will be updated from time to time. If there is any upgrade, please upgrade it online by yourself, without prior notice. The manual is for reference only